

SHELTER TO HOUSING PROJECT

Launch Meeting

1.22.15 | 9:30-11:00am



COMMITTEE TO
END HOMELESSNESS
KING COUNTY



**BUILDING
CHANGES**
END HOMELESSNESS
TOGETHER

Agenda

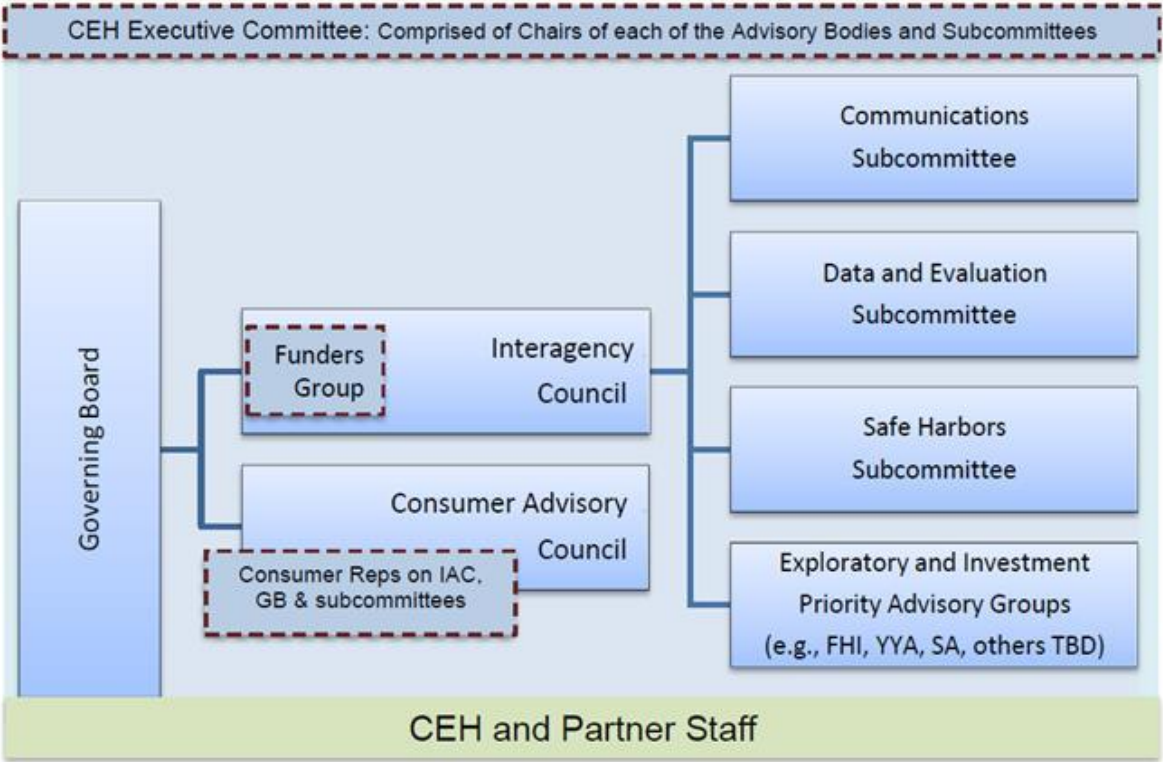
- Welcome!
- Overview of Shelter to Housing Project
- Q &A
- Group Activity
- Wrap-Up

Building Changes

- Intermediary Role
- System Innovation Grants (SIG)
- Capacity Building
- Measurement, Learning and Evaluation

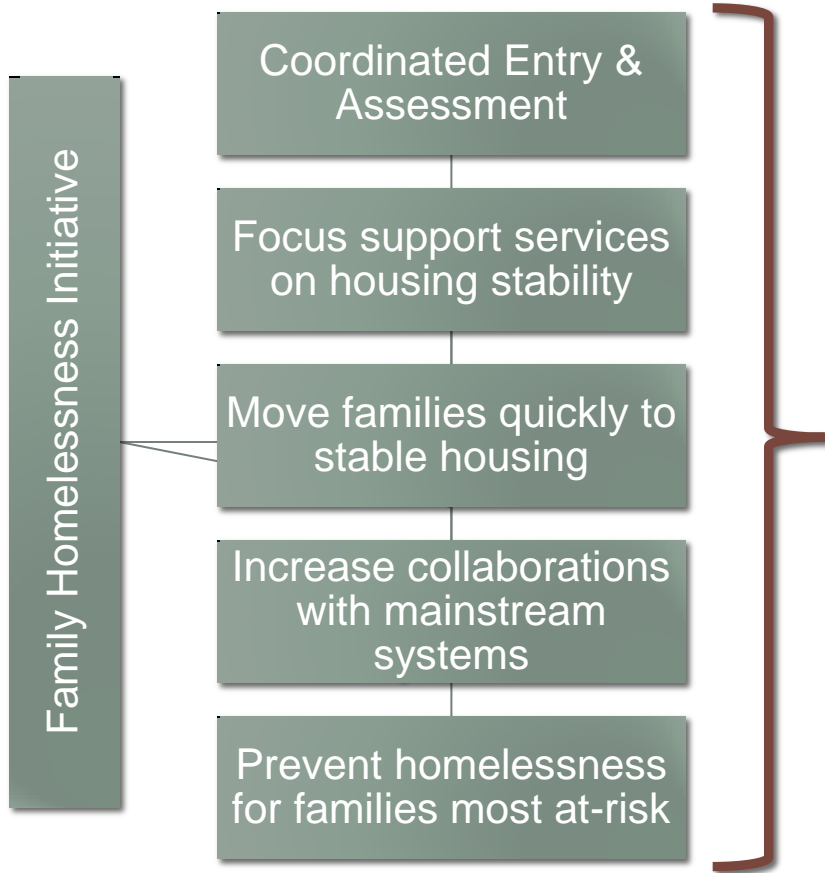
Committee to End Homelessness in King County Continuum of Care
CEH Continuum of Care (CoC) includes all organizations and individuals actively engaged in CEH activities. Membership is open, as everyone's help is needed to implement the Ten-Year Plan.

Charter can be found at:
www.cehkc.org



FAMILY HOMELESSNESS INITIATIVE

5 Key Areas of Transformation



Current Bodies of Work



Today

Project Background

- Input from and coordination with City of Seattle, King County, and United Way of King County
- Input from providers
- Supporting goals of our community & what we're learning
 - Rare, Brief, & One-Time
 - Diversion & Rapid Re-Housing
 - System Targets

Project Goals

- Assist families in quickly exiting to permanent housing directly from emergency shelter
 - Increase existing shelter system capacity
 - Reduce overall episodes of homelessness (lengths of stay)
- Improve how quickly families move out of shelter to alternative homeless housing programs
- Align public funding and program budgets to support lessons learned

Project Strategies

- Start with: “What will it take?”
- Explore all self-directed, re-housing options
- Explore perceived and real barriers from the family’s perspective
- Non-traditional solutions are great!
- Flexible client assistance*
- Focus on housing qualifications
- Coordination with partner providers

*It’s not always about \$\$

Project Guidelines

- Qualifications for housing
 - Identification
 - Birth certificates
 - Criminal background screening*
 - What can get resolved quickly?
 - How to adapt the housing search based on what the family learns?
 - Credit checks
 - Rental and utility arrears
 - Start payment plans
 - Ability to pay application fees and security deposits
 - Ability to pay 1st and last month's rent

Project Guidelines

- Creative housing solutions
 - Short-term assistance to supplement host-family's costs
 - Grocery cards
 - Rent payment
 - House or room share
- Address other barriers to housing and employment search
 - Emergency childcare assistance to attend an interview

Project Evaluation

- Quantitative Reporting

- # of families to receive financial assistance; type & amount; average per family each six months

- Qualitative Reporting

- Respond to key narrative questions during project meetings at six month intervals
Summary document will be developed and shared across the project

- One success story annually per agency

- Evaluation will help to inform future realignment efforts and to shape and expand emerging best practices

Future Alignment

- Based on lessons learned & promising practices identified among providers
- Establishing client assistance line items in operating budgets
- Evaluating levels of assistance/costs needed to sustain these efforts over-time
- Funding levels based on what it takes (as possible)

Q & A

Check In

- In one to three words –
 - How do you feel about this project at this point?

Break-Out Activity

What will you do first to start implementing this grant?

What might have to change about the way you do your work?

What questions do you have about the housing search process and want to ask your colleagues?

What Comes Next?

- Contracting with Building Changes
- Future Meetings